

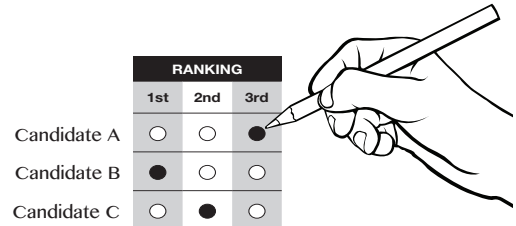


2012 PACIFICA FOUNDATION WBAI LISTENER DELEGATE ELECTION OFFICIAL BALLOT

INSTRUCTIONS

- Use a black or blue pen.
- You may rank as many or as few candidates as you like in the order of your preference.
- Fill in the circle in the first choice column in line with the name of your first choice candidate, the circle in the second choice column in line with your second choice candidate, and so on.
- Ranking second or later preference candidates can never hurt your more preferred choices.
- If you give more than one candidate the same ranking (circles in the same column), your vote can be divided between these candidates.
- You may write-in a candidate by filling out their name at the bottom of the ballot and assigning them a rank.
- Only original ballots are accepted. No copies.

EXAMPLE: To vote for Candidate B as a first choice, Candidate C as a second choice and Candidate A as your third choice, fill out your ballot as follows:



Please detach and discard the top panel and return bottom panel only.



2012 PACIFICA FOUNDATION WBAI LISTENER DELEGATE ELECTION OFFICIAL BALLOT

WBAI LISTENER CANDIDATE ELECTION FOR THE LOCAL STATION BOARD DELEGATES

We will elect 9 candidates on this list. You may rank as many candidates as you like.

Candidates are listed in alphabetical order starting with a randomly selected candidate.

	RANKING																			
	1 st	2 nd	3 rd	4 th	5 th	6 th	7 th	8 th	9 th	10 th	11 th	12 th	13 th	14 th	15 th	16 th	17 th	18 th	19 th	20 th
Russell Dale	○	○	○	○	○	○	○	○	○	○	○	○	○	○	○	○	○	○	○	○
Murray Gordon	○	○	○	○	○	○	○	○	○	○	○	○	○	○	○	○	○	○	○	○
Eugene Hamond	○	○	○	○	○	○	○	○	○	○	○	○	○	○	○	○	○	○	○	○
William Heerwagen	○	○	○	○	○	○	○	○	○	○	○	○	○	○	○	○	○	○	○	○
Ken Laufer	○	○	○	○	○	○	○	○	○	○	○	○	○	○	○	○	○	○	○	○
Frank LeFever	○	○	○	○	○	○	○	○	○	○	○	○	○	○	○	○	○	○	○	○
Patricia Logan	○	○	○	○	○	○	○	○	○	○	○	○	○	○	○	○	○	○	○	○
Mario Mastrandrea	○	○	○	○	○	○	○	○	○	○	○	○	○	○	○	○	○	○	○	○
Cookie Palmer	○	○	○	○	○	○	○	○	○	○	○	○	○	○	○	○	○	○	○	○
Cerene Roberts	○	○	○	○	○	○	○	○	○	○	○	○	○	○	○	○	○	○	○	○
Manijeh Saba	○	○	○	○	○	○	○	○	○	○	○	○	○	○	○	○	○	○	○	○
Sharonne Salaam	○	○	○	○	○	○	○	○	○	○	○	○	○	○	○	○	○	○	○	○
Jeremy Taylor	○	○	○	○	○	○	○	○	○	○	○	○	○	○	○	○	○	○	○	○
Robert Young	○	○	○	○	○	○	○	○	○	○	○	○	○	○	○	○	○	○	○	○
Luis Barrios	○	○	○	○	○	○	○	○	○	○	○	○	○	○	○	○	○	○	○	○
Thomas Barton	○	○	○	○	○	○	○	○	○	○	○	○	○	○	○	○	○	○	○	○
Carlos Canales	○	○	○	○	○	○	○	○	○	○	○	○	○	○	○	○	○	○	○	○
Ebon Charles	○	○	○	○	○	○	○	○	○	○	○	○	○	○	○	○	○	○	○	○
Shahid Comrade	○	○	○	○	○	○	○	○	○	○	○	○	○	○	○	○	○	○	○	○
Diana Crowder	○	○	○	○	○	○	○	○	○	○	○	○	○	○	○	○	○	○	○	○
WRITE-IN CANDIDATE	○	○	○	○	○	○	○	○	○	○	○	○	○	○	○	○	○	○	○	○

IMPORTANT: Ballots must be received by Election Services Corporation by December 11, 2012 to be counted!
 Use the business reply envelope provided or your own envelope mailed to:
 Pacifica Foundation Election Processing, c/o Election Services Corp., PO Box 9023, Ronkonkoma, NY 11779